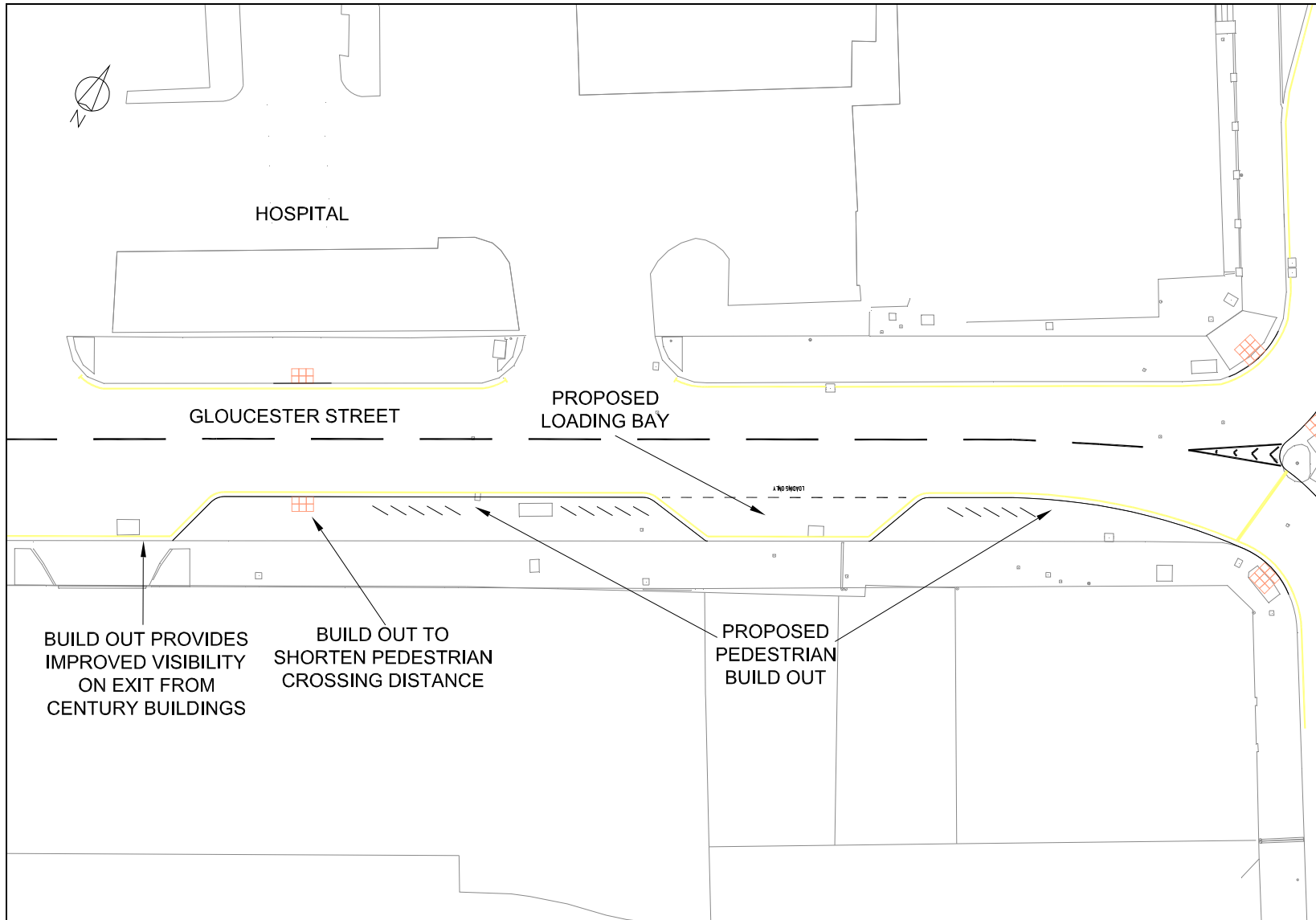
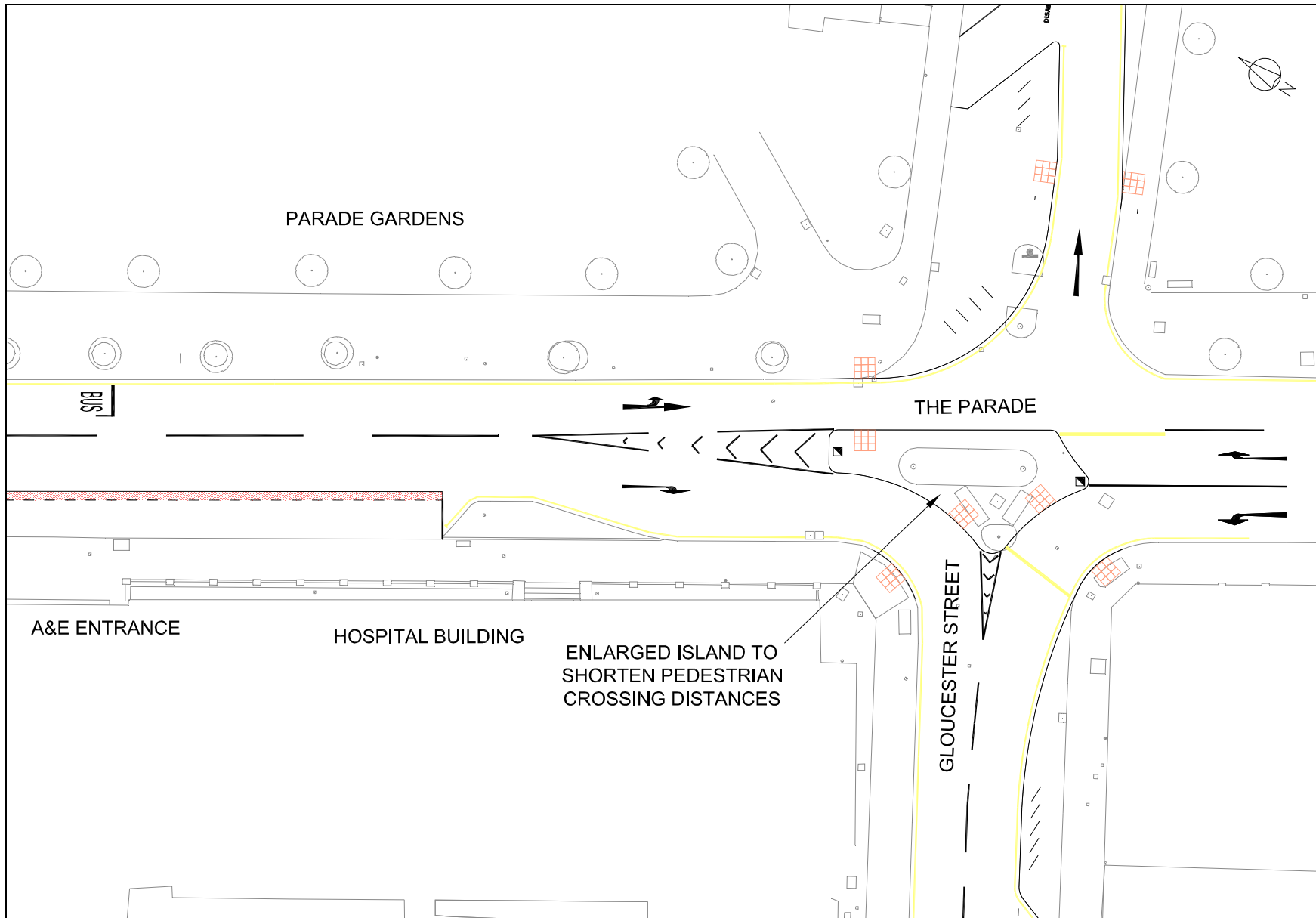


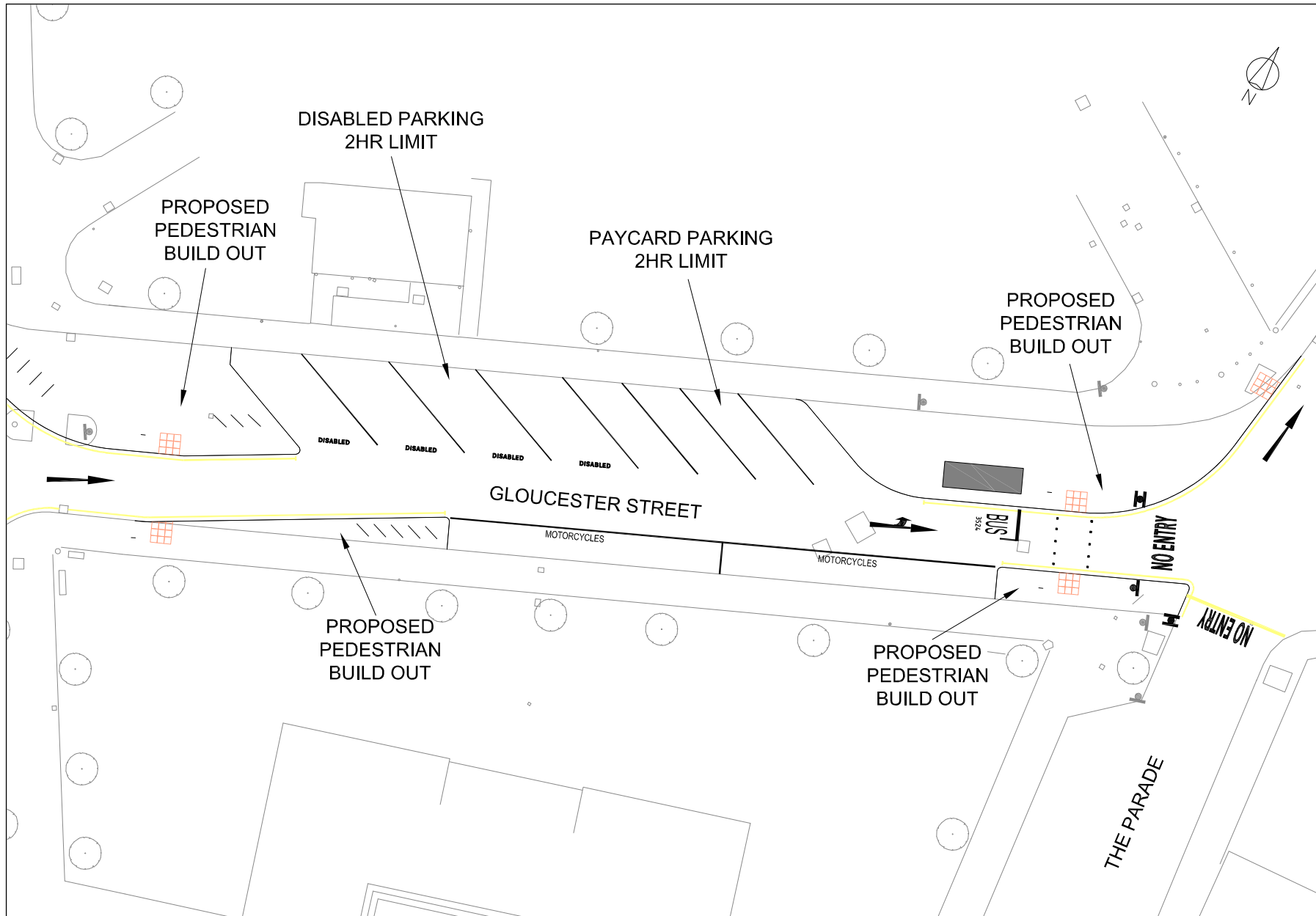
Sketch 1, improved pedestrian facility for pedestrians crossing Newgate Street at the junction with Gloucester Street.



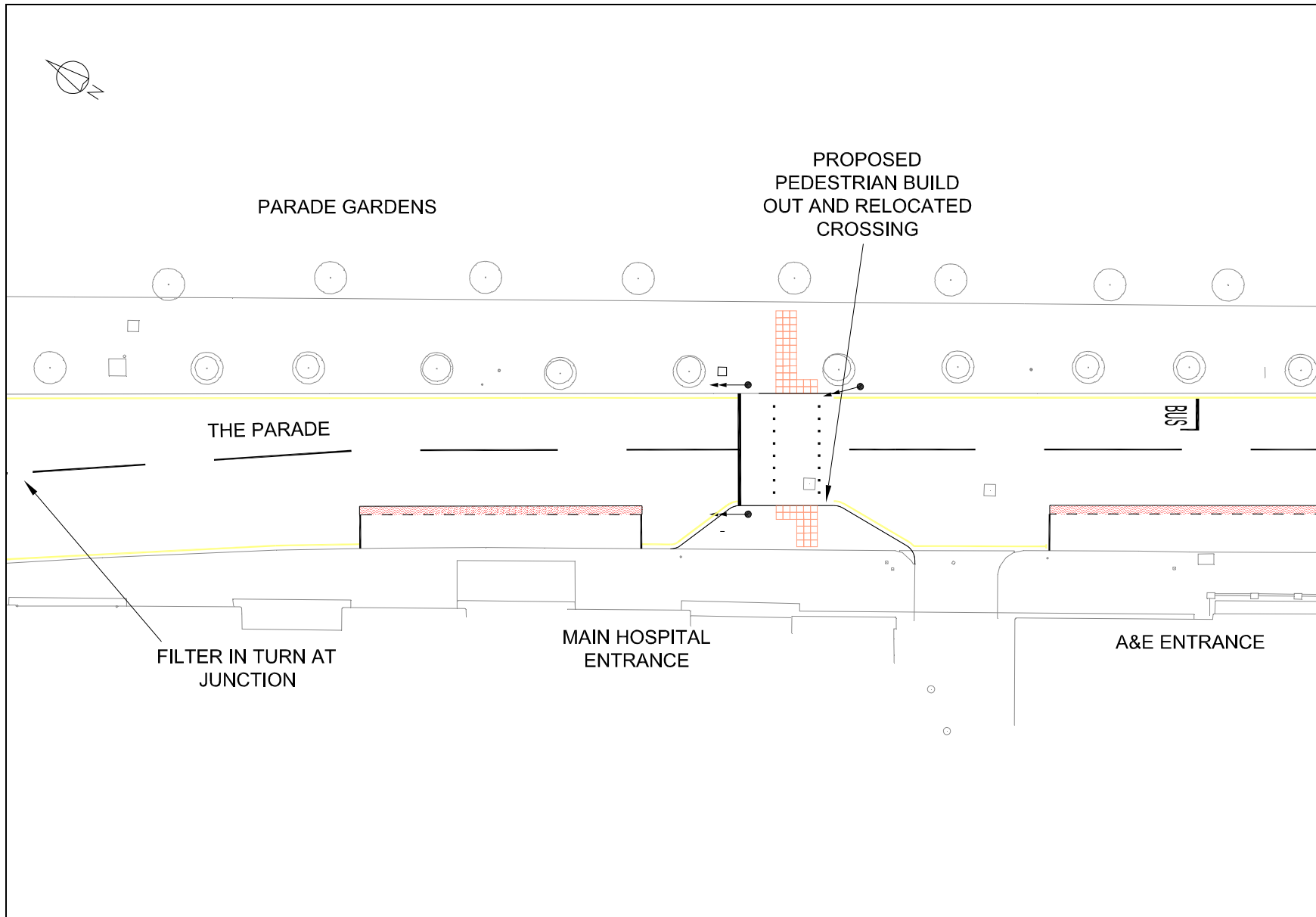
Sketch 2 widened pavement to protect visibility from Spectrum exit, and crossing distances for pedestrians on Gloucester Street.



Sketch 3 larger splitter and pedestrian refuge island at junction of Gloucester Street and the Parade.



Sketch 4, improved street layout and pedestrian facilities on section of Gloucester Street adjacent to the Don memorial.



Sketch 5, showing the re location of the pedestrian crossing in the Parade to a location that matches the Hospital entrances.